



March 2014

## Welcome to Design Lines, our first newsletter for 2014!

The first few months of 2014 have flown by. With Easter just around the corner, our team has been busy quoting, designing and building some great new homes.

I am particularly excited to share some photos of a **Cape Cod style home** we built recently at Mt Tamborine. Please scroll down to see images from this project.

Don't forget you can talk to us about contemporary, traditional and sandstone style homes. Simply call us or visit one of our [display homes](#) in Brisbane or Townsville.

April and May are shaping up to be very busy months with a number of great new projects planned. I look forward to showing you through our new developments in our next newsletter.

**Garth**

Garth Chapman Queenslanders

## Just completed: Cape Cod Style

Located at Mt Tamborine, this Cape Cod style home boasts four bedrooms, study and upstairs rumpus. Modern contemporary appliances and fittings have been matched to stone benchtops and vanities to provide a delightful sense of light and breeziness.

With a steep 40 degree roof pitch the home is designed to take advantage of sweeping coastal views. **View more photos and tell us what you think on our [Facebook Page](#).**



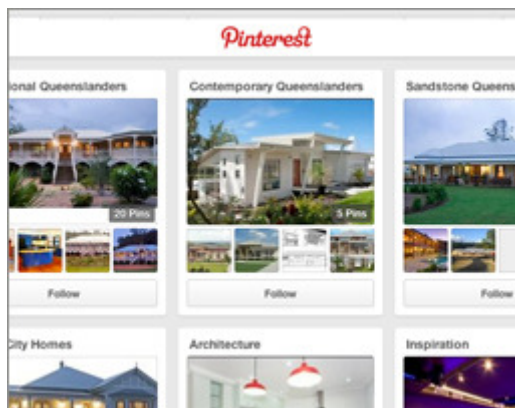
## Coreen Manor for Sale:

Located at Mount Samson, 'Coreen Manor' is a Hamilton Series home designed by Traditional Queenslanders to encapture open plan living with traditional grandeur. It is now on sale and can be viewed at either realestate.com or on our [Pinterest Page](#).



## Home Energy Saving Tips

In February, we posted a blog on our website with [5 great tips to save on your energy costs](#). There are many easy and effective ways to make your home a little greener including considering your homes orientation, insulation, water efficiency, lighting and windows. It really only takes that tiny bit more effort and you will reap the benefits of saving on your energy bills, improving the comfort of your home and helping the environment!



## Garth has been Pinned!

Garth Chapman Queenslanders now has a Pinterest Page that is up and running! By following our Pinterest page, you will be able to view photographs of our traditional and contemporary queenslanders, along with images of compelling architecture and ideas for your home. To stay connected, simply visit [www.pinterest.com/garthchapman](http://www.pinterest.com/garthchapman) and then 'follow all' our boards or only ones that interest you. We will be continually developing the page so click on the link and see what it's all about!

## Contact the Garth Chapman Team:

### **Brisbane & Gold Coast & Ipswich**

Phone: (07) 3264 3304

Mobile: 0448 744 437

### **Sunshine Coast, QLD**

Phone: 1300 666 776

Mobile: 0428 596 497

### **Toowoomba region west of Ipswich to**

#### **Stanthorpe**

Phone: 0448 744 437

### **Mackay & District**

Phone: 1300 666 776

### **Townsville, Ayr, Charters Towers & Ingham**

Phone: 1300 666 776

### **Queensland north of Proserpine including part of Atherton Tablelands**

Phone: 1300 666 776

### **All other areas of Queensland**

Phone: 1300 666 776

### **Lismore, NSW**

Phone: (02) 6629 5342

Mobile: 0428 666 882

### **All other areas of Australia**

Phone: 1300 666 776